



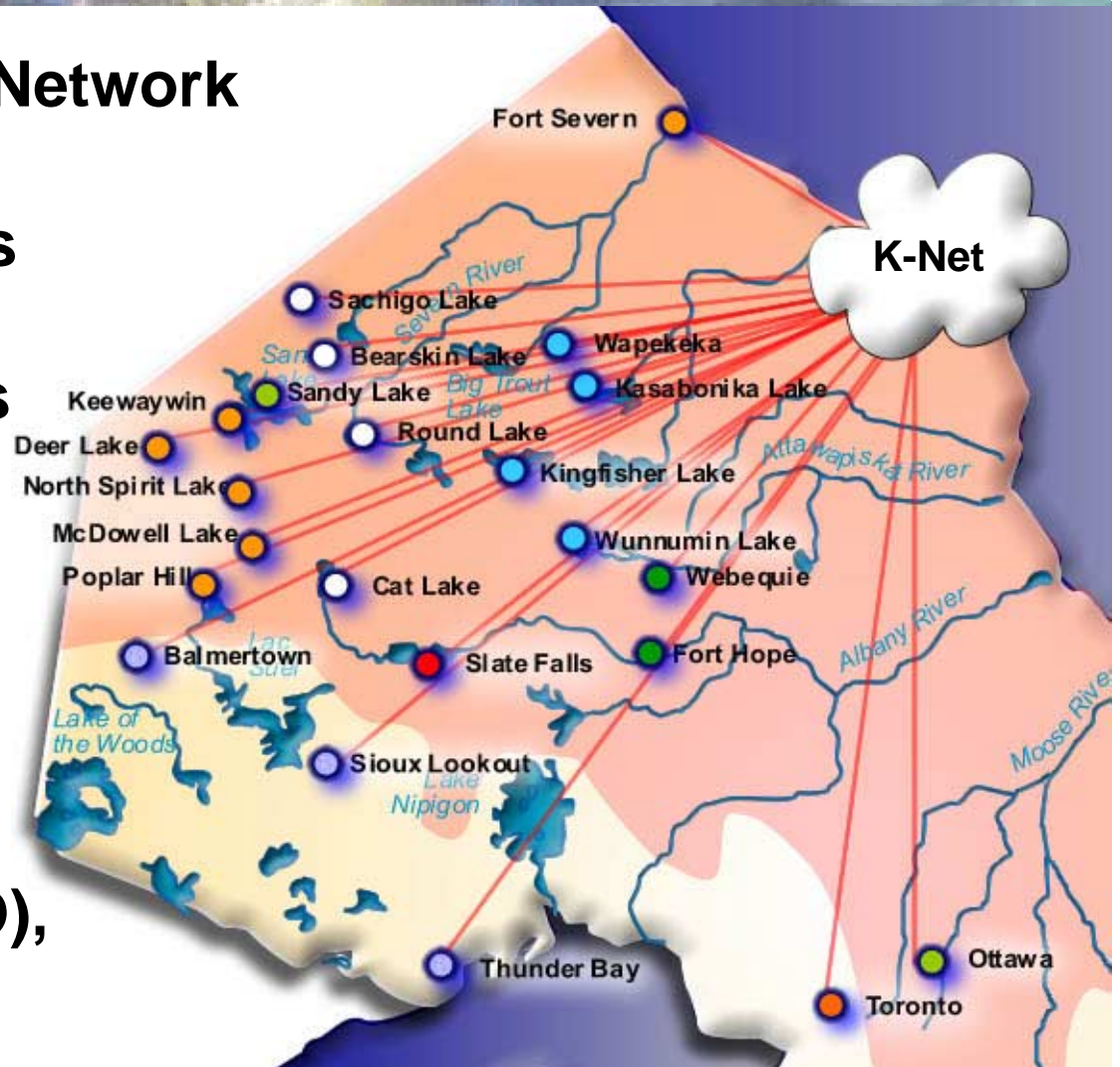


## Growing the Kuh-ke-nah Network

### Adding more First Nations

- Slate Falls
- Shibogama communities
- Windigo communities
- Webequie & Fort Hope
- Sandy Lake

Bringing on Toronto (ENO),  
Thunder Bay & Ottawa







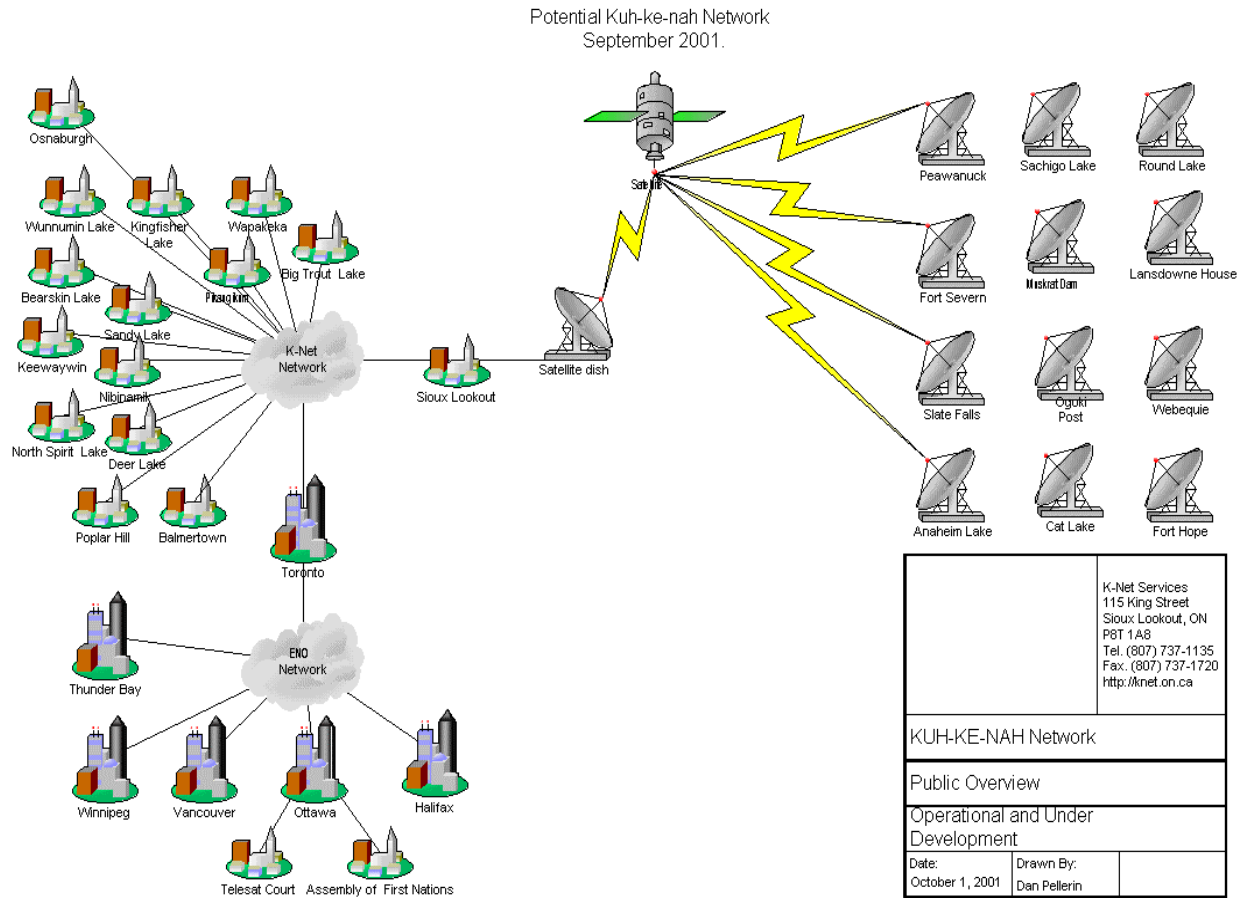
## Putting the Infrastructure in place



Fort Severn C-Band earthstation

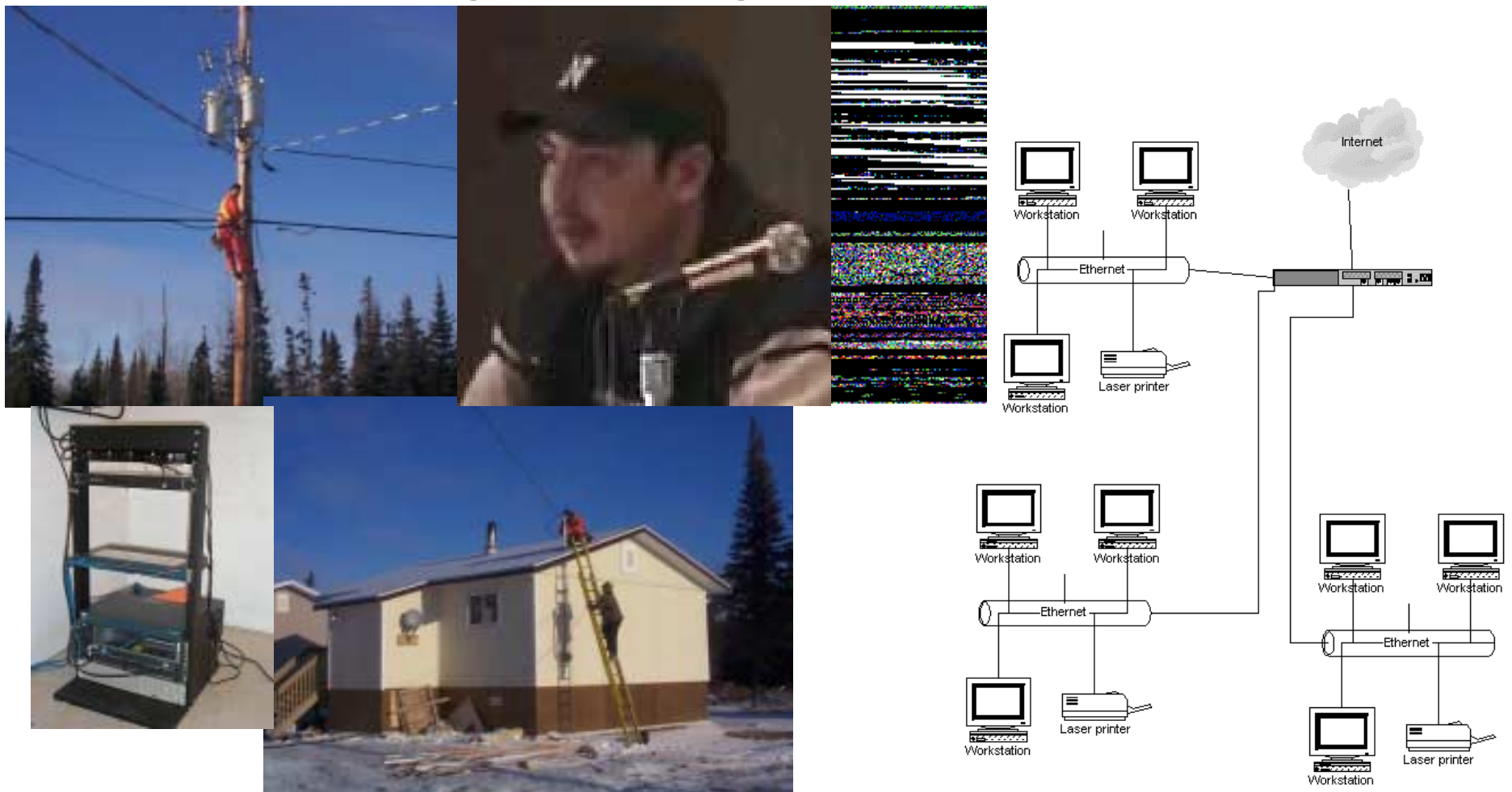


Sioux Lookout C-Band earthstation





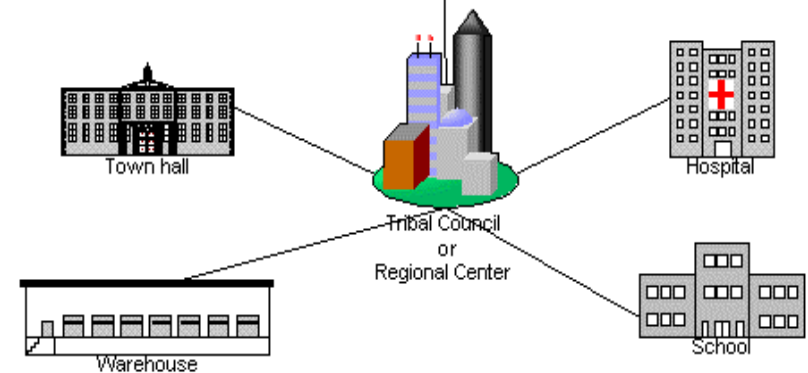
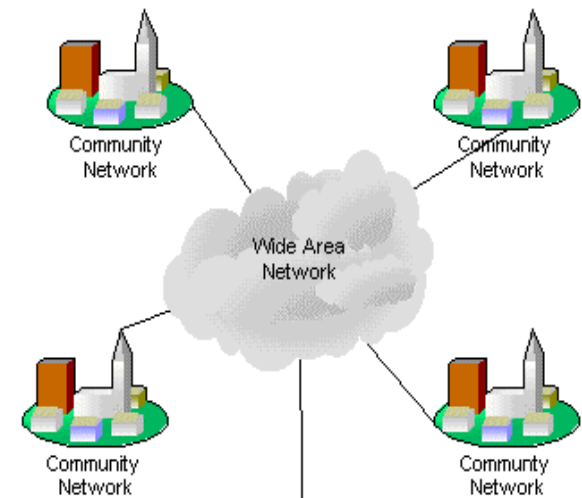
## Connecting the local organizations and businesses







## Connecting the Service Providers



# HOW WE GOT HERE ...

<http://knet.ca/NW-report.htm>

*“From Potential to Practice: Telecommunications & Development in the Nishnawbe-Aski Nation”*

**Capacity Building**

**Local Area and Municipal Area Networking**

**K-Net e-Mail Account Penetration**

**Community Access to the Internet**

**Website Utilization**

**Helpdesk Services**

**Network Design and Strategy Development**

**Affordable Network Access**

**Growth in Digital Service in First Nations**

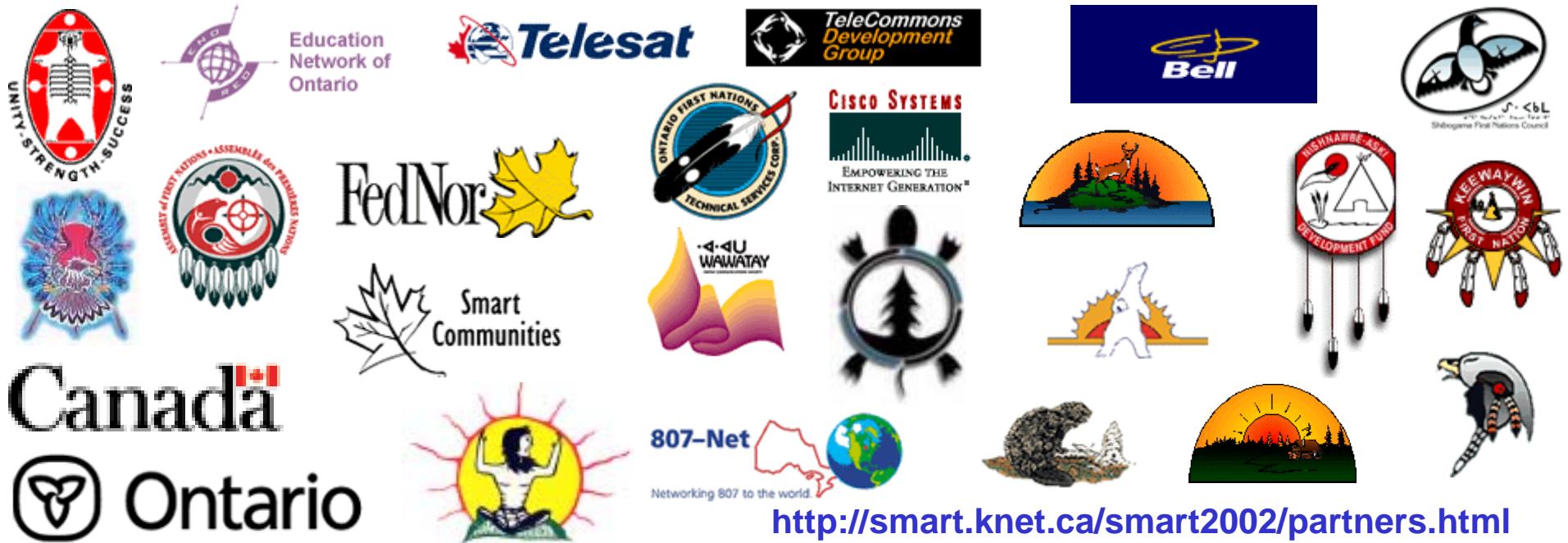






## Building New PARTNERSHIPS for Broadband Connectivity

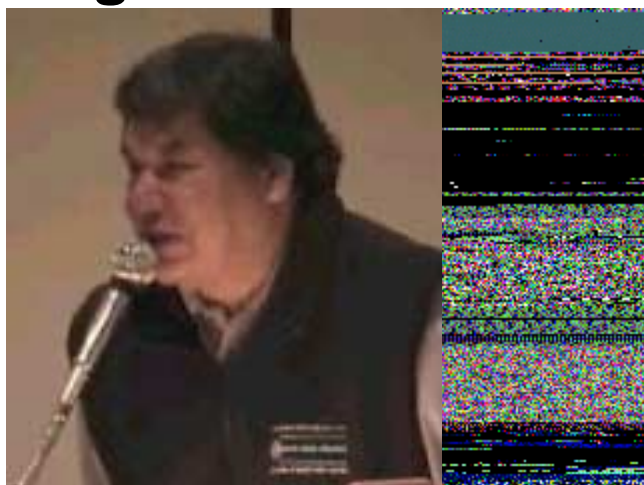
*Good partners are those that support equitable and affordable access to ALL broadband services and connectivity in the spirit of SHARING and RESPECT. It is not about being “taken care of”, creating dependencies or holding back information.*



<http://smart.knet.ca/smart2002/partners.html>



## Finding INFORMATION about THE KUH-KE-NAH NETWORK



- Website - <http://knet.ca>  
(<http://smart.knet.on.ca> )
- Geordi Kakepetum, Ex Dir  
([geordi.kakepetum@knet.ca](mailto:geordi.kakepetum@knet.ca))
- Dan Pellerin, Network Manager  
([dan.pellerin@knet.ca](mailto:dan.pellerin@knet.ca))
- K-Net Services at  
877-737-KNET (5638)